

The background of the entire page is a dark green color with a complex, glowing circuit board pattern. The pattern consists of numerous thin, light green lines that trace various paths across the page, interspersed with small, circular light green dots that resemble solder points or vias. The lines and dots are more densely packed in some areas, creating a sense of depth and technological sophistication.

eltwin

Eltwin Group

Drives and Electronics for HVAC Applications

A decorative horizontal band at the bottom of the page. It features several parallel horizontal lines in a light green color. On the right side of this band, there is a stylized, geometric representation of a circuit component, possibly a resistor or a connector, also in light green.

Since
1976

Introduction

At Eltwin Group, we push technology forward to deliver sustainable, efficient, and innovative power electronics tailored to your needs. With over 45 years of experience, we help you achieve environmental and financial gains by combining customized solutions with proven technology.

Our Expertise

We believe in co-creation, working closely with you to develop tailored HVAC solutions that perfectly match your requirements. From design to delivery, our expertise and resources make us your one stop shop for power electronics, streamlining the process and saving you time and effort.

A Global Impact

As part of the NIBE Group, we contribute to reducing carbon footprints and improving energy efficiency through eco-friendly solutions for homes, industries, and infrastructure.

Innovation Meets Excellence

Our state-of-the-art facilities unite engineering expertise and advanced project management, ensuring efficient, environmentally friendly solutions.

Choose Eltwin for

- › Customized power electronics through co-creation
- › Reliable and proven technology
- › A one stop shop for sustainable and innovative solutions
- › Partner with us to create a positive environmental and financial impact

Co-creation and One Stop Shop

At Eltwin, we believe the best solutions come from collaboration. That's why co-creation is central to our approach where we work closely with you to develop tailored solutions that meet your exact needs.

Co-Creation

We combine your application expertise with our technical knowledge to create drives that deliver maximum performance and reliability. From understanding your requirements to prototyping and refinement, we ensure every product is purpose-built for your specific goals.

One Stop Shop

As your single point of contact, Eltwin offers a complete solution, making it easier and more efficient to bring your ideas to life. A unified solution means reduced project complexity, shorter lead times, and reliable results. By choosing Eltwin, you gain the advantage of a partner who can handle every aspect of your project, delivering high-quality, customized drives that optimize your application.



EC PURE Drives

The EC PURE Drives are actively cooled compact and modular EC drives that can be customized to meet your specific application needs. Thanks to the modularity, you can apply filters and power factor correction (PFC) if, and where, you need it.

Voltage

- › Single phase: 208 – 230 Vrms, 50/60 Hz
- › Three phase: 380 – 400 Vrms, 50/60 Hz

Power

- › Single phase: 2200, 2900, 4400, 8000 W
- › Three phase: 5500, 7500 W

Applications

- › Heat pump compressors
- › Water pumps
- › Conveyors



EC NOVA Drives

The EC NOVA Drive is a customizable, compact EC drive designed for various HVAC and industrial applications. With active and passive cooling options and an IP54 rating (adjustable up to IP67), it's ideal for demanding environments.

Built on a reliable foundation, the NOVA Drive offers flexibility to meet specific needs, combining proven technology with customization. The plug-and-play solution ensures quick setup with no complicated manuals.

Voltage

- › 230 Vrms 50/60 Hz

Power

- › Single phase: 75, 200, 550, 800, 1100, 1500, 2400 W

Applications

- › Air handling units
- › Compressors
- › Water pumps
- › Conveyors
- › Refrigeration



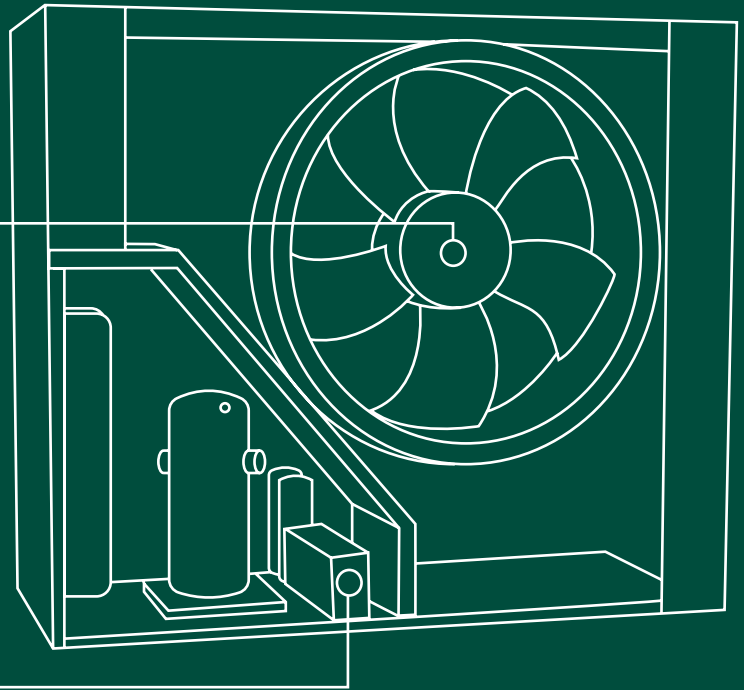
Heat pump



EC Integrated Drive
or EC NOVA Drive



EC PURE Drive

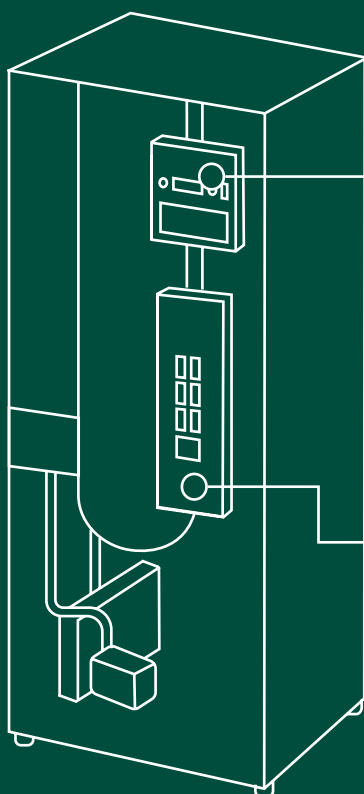
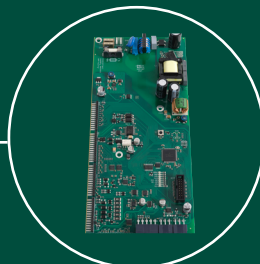


Option to make an integrated solution customized for your heat pump design

User interface



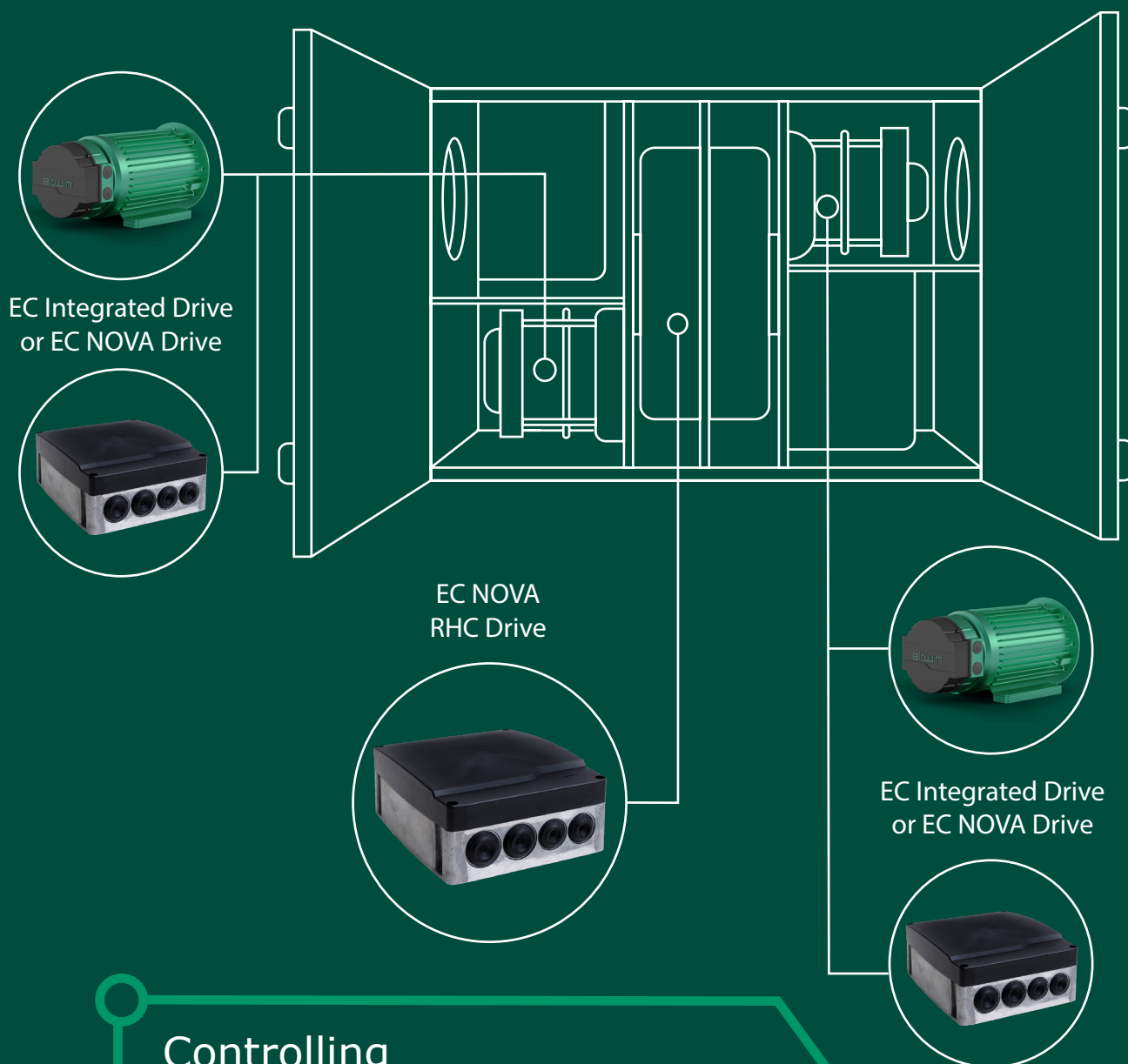
Controller



Controlling

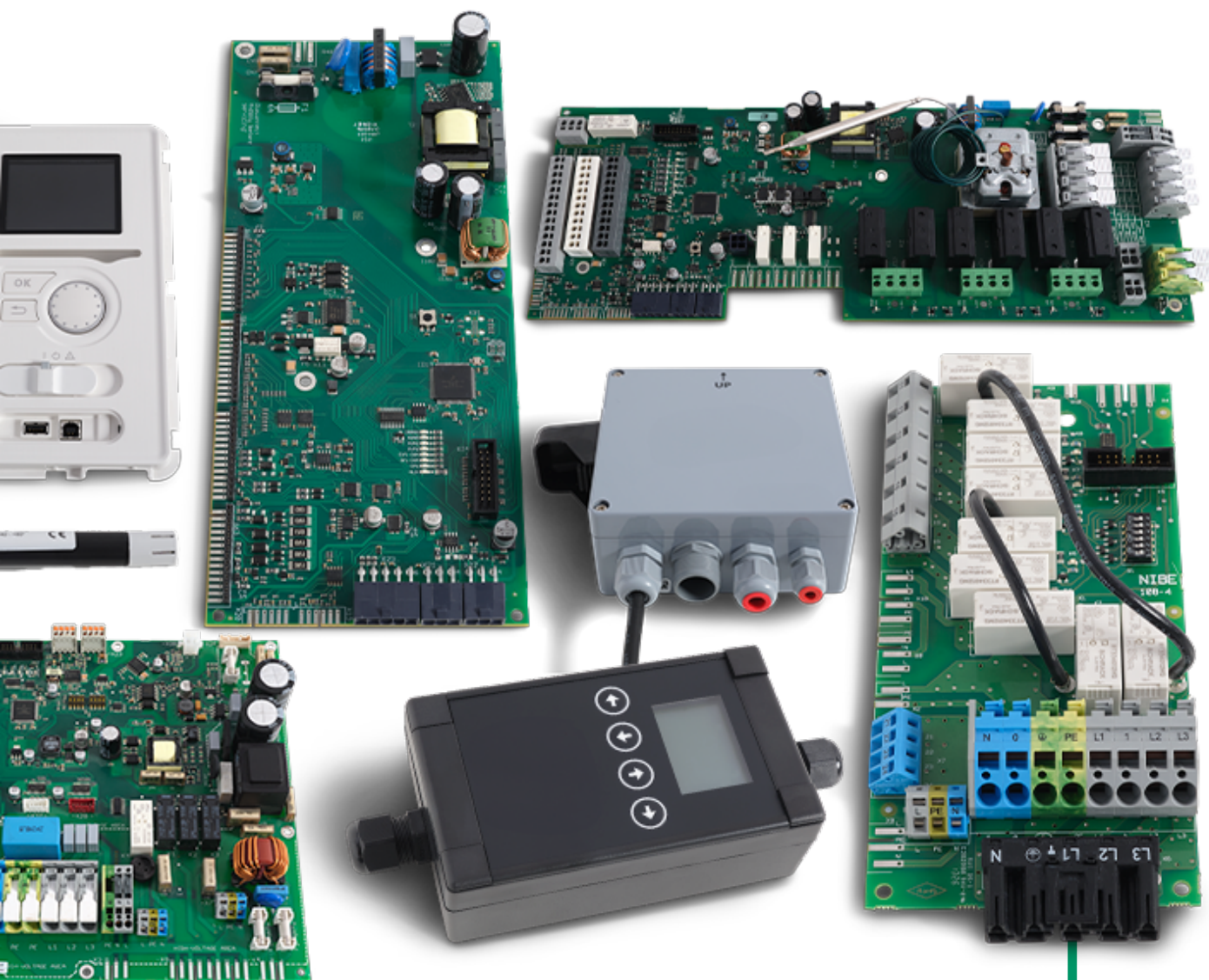
- › User Interface, controller, communication
- › Sensors for pressure, temperature and humidity
- › Weather station

Air handling unit



Controlling

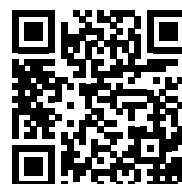
- › User Interface, controller, communication
- › Sensors for pressure, temperature and humidity
- › Weather station



Customized Controls

At Eltwin, we specialize in developing and manufacturing customized electronic controls for HVAC and industrial applications. We build on reliable, tested technology to meet each customer's unique needs.

In addition to controls, we offer a full package of sensors for pressure, temperature and humidity, making us a complete supplier of integrated Control.



Eltwin Hyper SureStart®

Eltwin Hyper SureStart® ensures your compressor and motor starts smoothly on back-up generator or battery power. It comes packed with a comprehensive range of protection features and it allows the user to minimize annoying start-up noise and light flicker. With soft start technology, it's trusted globally across industries like residential AC, heat pumps, marine, RVs, and critical military applications.

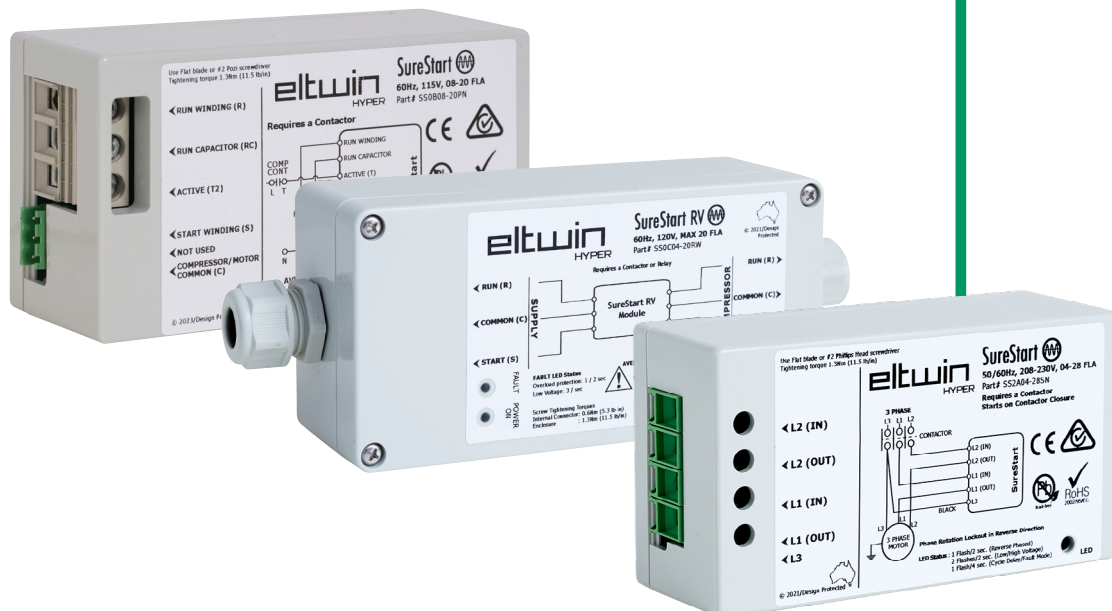
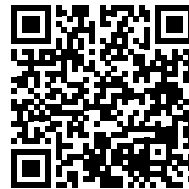
SureStart® works for both single and three-phase applications, featuring auto-optimization for easy installation without a user interface. Fully CE and UL approved, it complies with RoHS, REACH, 3TG, and Prop65 regulations.

Supply Voltage Range

- › Single Phase: 115V, 220-240V
- › Three Phase: 208-230V, 380V, 415V, 460V

Applications

Residential AC, geothermal heat pumps, marine and RV AC, cold storage, submersible pumps, and customized solutions for military, government, and industrial use.



IC Contactors

Extend the life of your compressors and motors with our soft starter, which reduces startup noise and mechanical stress.

Supply Voltage Range

- › 12-240V
- › 24-480V
- › 24-600V

Benefits

- › Reduces inrush current by up to 60-70%
- › Minimizes light flicker and startup noise
- › Extends motor and compressor lifespan
- › Includes motor protection functions

Applications

HVAC/R, trucking, solar power, military, marine, compressors, backup generators.



Driving Joint Value Creation

At Eltwin, our Customer Account Team works closely with you to create long-term value. Each team member plays a key role in ensuring your success:

- › CEO
- › Key Account Manager
- › Customer Support/Internal Sales
- › Technical Support
- › Purchase
- › Quality

Our combined expertise fosters continuous innovation and optimization, driving greater efficiency, sustainability, and performance. This partnership not only helps us solve challenges and create value together but also positions Eltwin as your trusted long-term partner, delivering reliable, high-quality solutions that support your business growth and create lasting value.

Through close collaboration between our Customer Account Team and your team, we gain a deep understanding of your unique needs, allowing us to tailor solutions and address challenges that arise. By aligning every step of the process with your goals, we ensure smooth delivery and long-term success.

See examples of
how we create
value at our blog



Jens Ebbesen
CEO
+45 4422 0658
jeb@eltwin.com



Jesper Kastrup
Head of Business
Development & Sales
+45 3058 7653
jrk@eltwin.com



Ole K. Mortensen
Head of NIBE
Group Sales
+45 8736 8603
okm@eltwin.com



Mitch Gulseth
Business Area Manager,
North America
+1 847 931 1304
mitch.gulseth@eltwin.com



Mai Thanh Grieves
Junior Account Manager,
North America
+1 847 931 1304
mai.grieves@eltwin.com



Michael V. Sørensen
Product Manager, Drives
+45 8773 6311
mvs@eltwin.com



Ruben Sanchez
Technical Key
Account Manager
+45 7155 0959
rsa@eltwin.com



Lasse Z. Agerbæk
Key Account Manager
+45 2233 0670
lza@eltwin.com



Malin Conradsen
Marketing Manager
+45 8773 6332
mcc@eltwin.com

A close-up, high-contrast photograph of a microscope's objective lens and stage, positioned over a green printed circuit board (PCB). The PCB is populated with various electronic components, including integrated circuits and resistors. The image is overlaid with a semi-transparent teal filter. In the top right corner, there are three horizontal teal lines.

eltwin

Contact

Eltwin Group

Torsøvej 1B
8240 Risskov
Denmark



Phone:
+45 8621 6100



Website
eltwin.com



LinkedIn
[eltwin](#)

At Eltwin Group, you are met by a dedicated team of professionals. With offices around the world, you will benefit from our local understanding and global muscle power.